
Dust Over Jordan

BY:
Dr.Ziyad Balasmeh

2ND TRAINING COURSE ON
WMO(SATELLITE AND GROUND
OBSERVATION AND MODELLING OF
ATMOSPHERIC DUST)
21th -25th November 2011
ANTALYA,TURKEY.

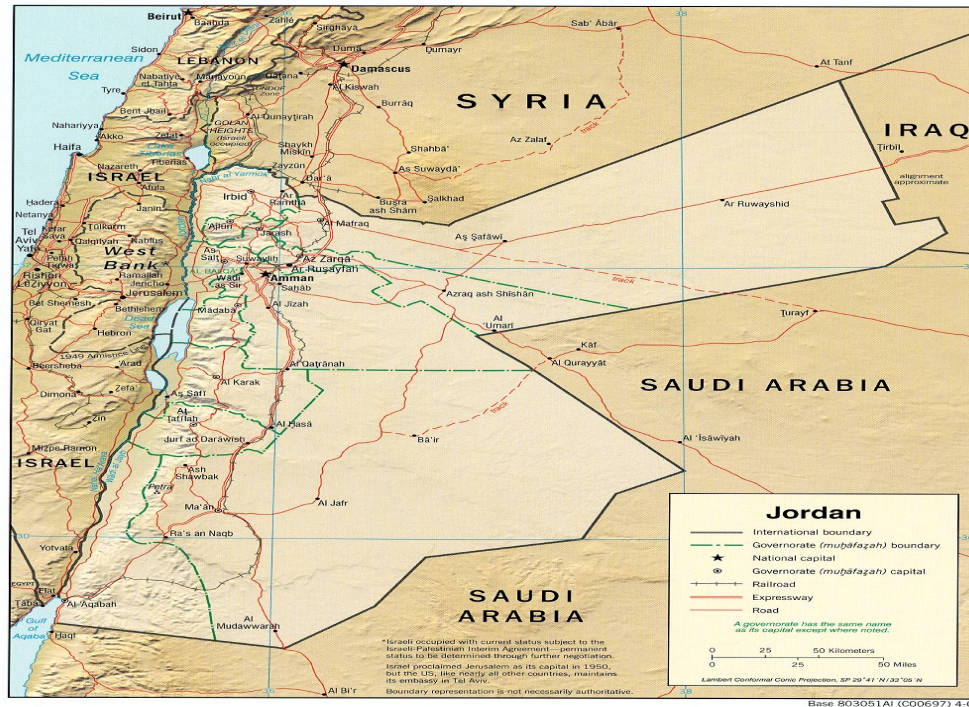
OUTLINES:

- INTROUDUCTION
 - DIRECTION WIND RELATED TO DUST AND SAND.
 - WHEN THE DUST EFFECTS JORDAN
 - SPECIAL EVENT
 - THE HOME COUNTRY.
-

INTROUDUCTION

- Dust and sand effects are the most serious problems affect the atmosphere due to the chemical particles which contains and their a lot influences on human activities.
 - Forecasting this phenomenon may reduce the expected hazards.
 - Dust and sand influences
Health, farms and crops, visibility, daily transport activities and others.
-

ALMOST THE EASTERN AND SOUTHERN
AREAS OF THE COUNTRY MAY
CHARACTERIZED AS DESERT LANDS.



DIRECTION WIND

- THE MAIN FACTOR OF DUST OR SAND AFFECTING JORDAN IS RELATED TO THE DIRECTION OF THE WIND.
- USUALLY THE WIND DIRECTION WHICH CAUSING DUST OR SAND OVER JORDAN CAN BE ONE OF THE FOLLOWING DIRECTIONS:
- NORTH-EASTERLY
- SOUTH-EASTERLY
- SOUTH-WESTERLY



WHEN THE DUST EFFECTS JORDAN

Khamaseen:

- During the spring each year, the Eastern Mediterranean (**INCLUDING JORDAN**) is affected with Khamaseen dust cyclones.
 - The source:
From the North African Sahara.
 - The period: ~ 50 days.
 - Starting:
Late March and ending in early May.
-

SPECIAL EVENT

**ON 27th SEPTEMBER,
JORDAN AFFECTED WITH UNLOCALY
DUST HAZE COME FROM THE NORTH –
WESTREN AREA OF IRAQ.**

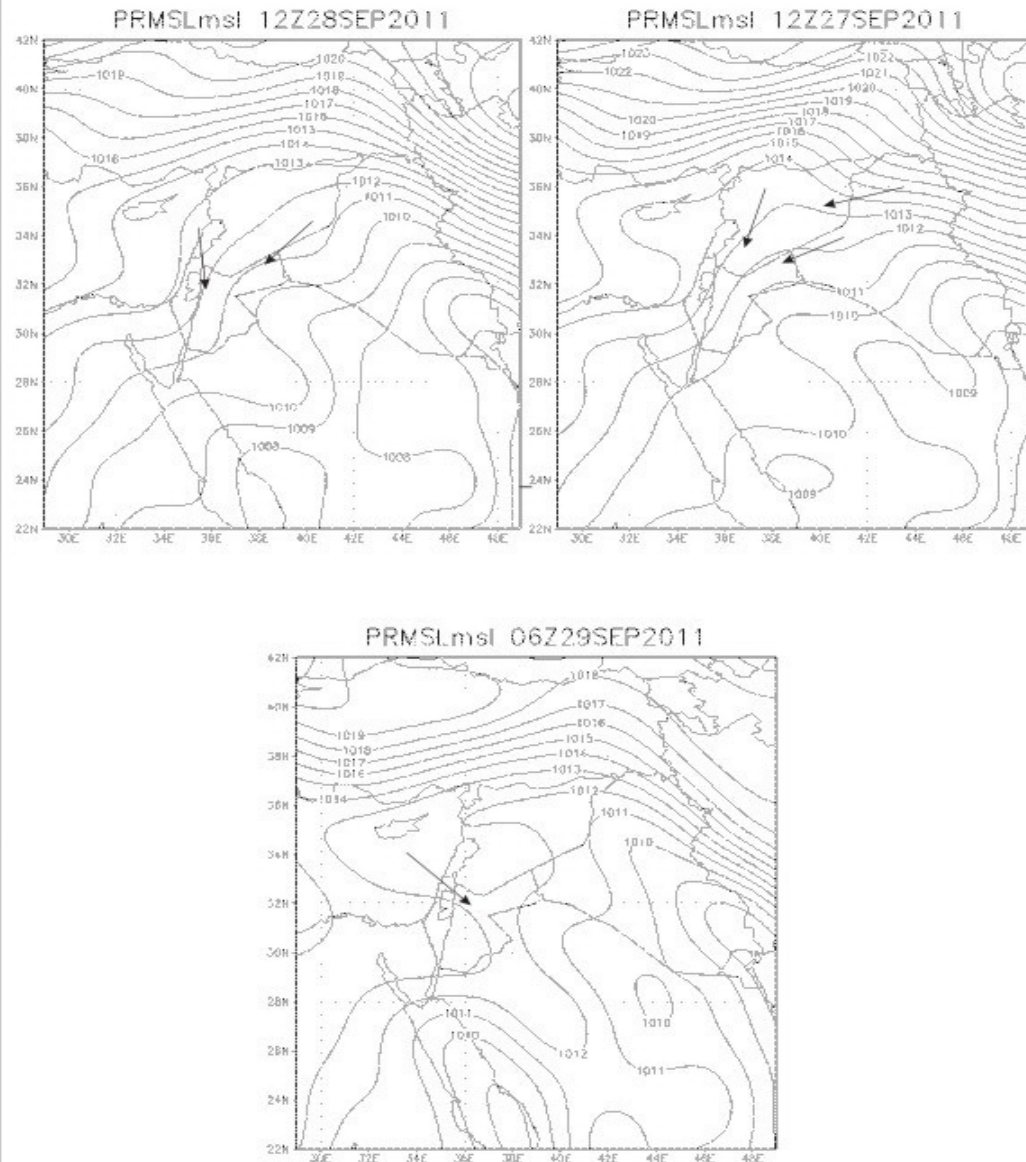
**ACCORDING TO THE SYNOPTIC
CONDITION:**

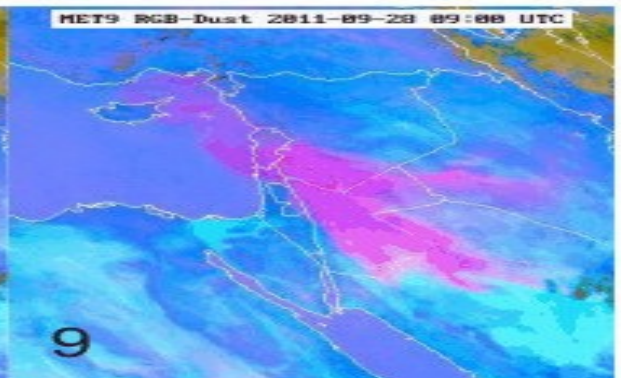
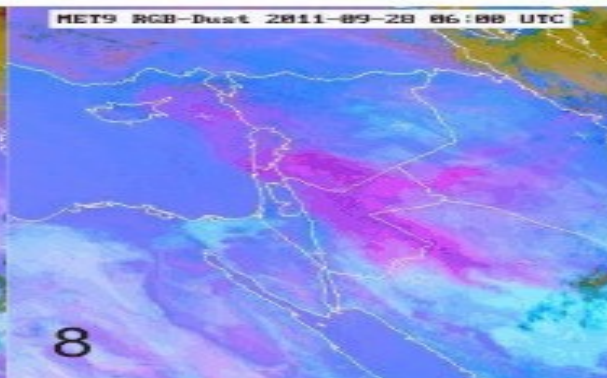
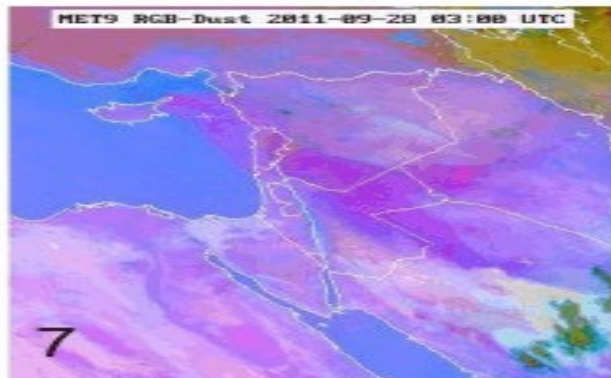
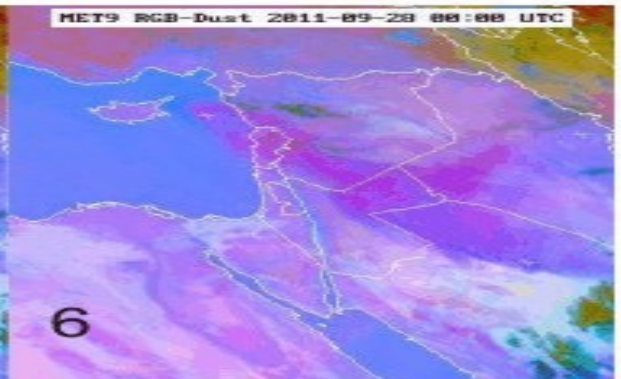
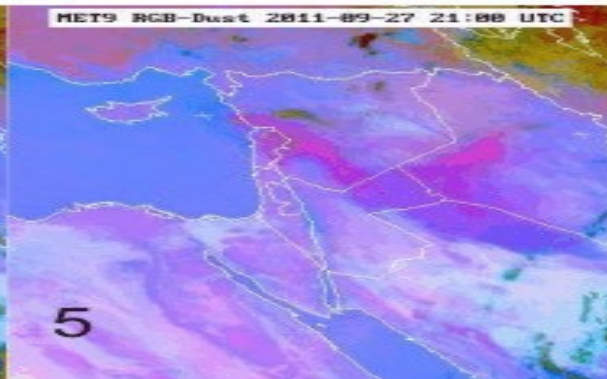
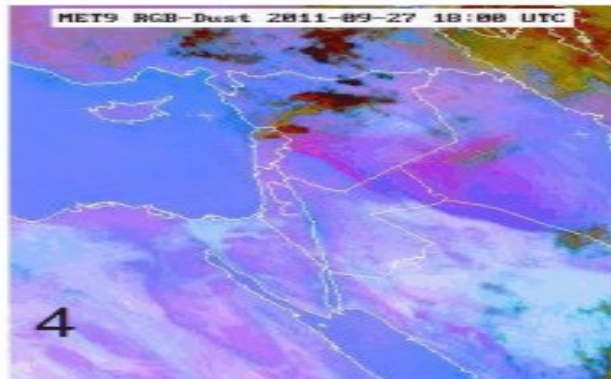
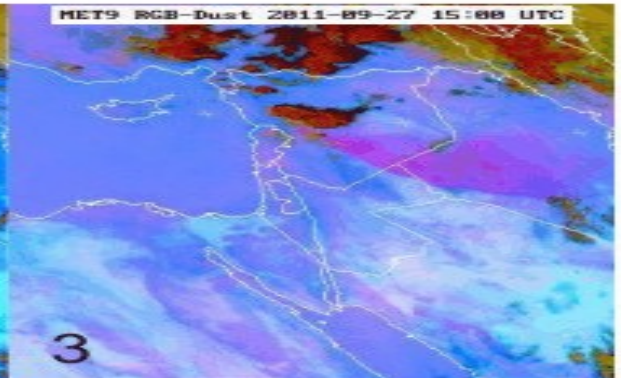
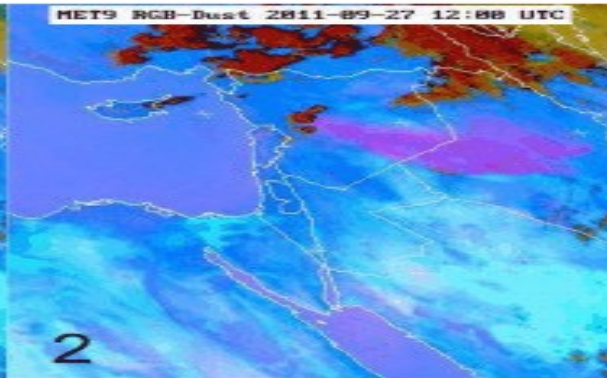
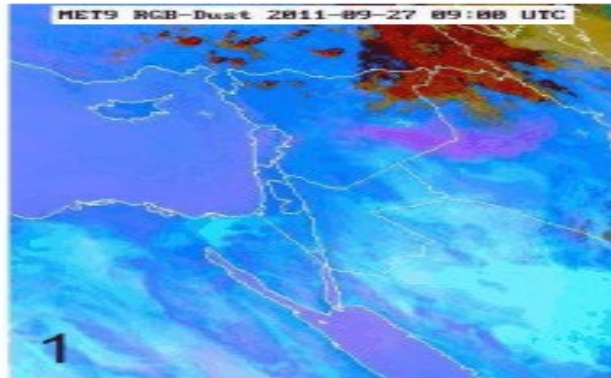
STARTING: THE NORTH- EASTREN AREAS
BEING UNDER THE TROUGHING
PRESSURE SYSTEM.

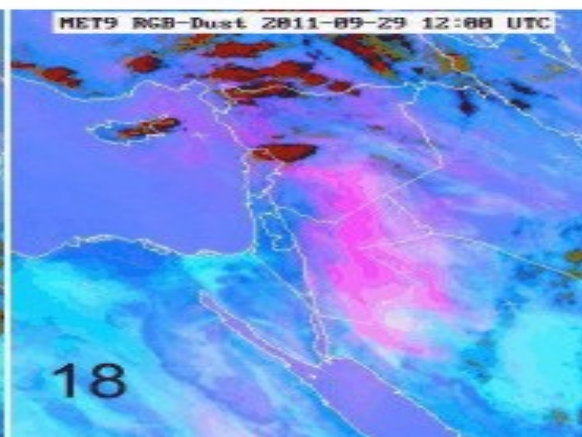
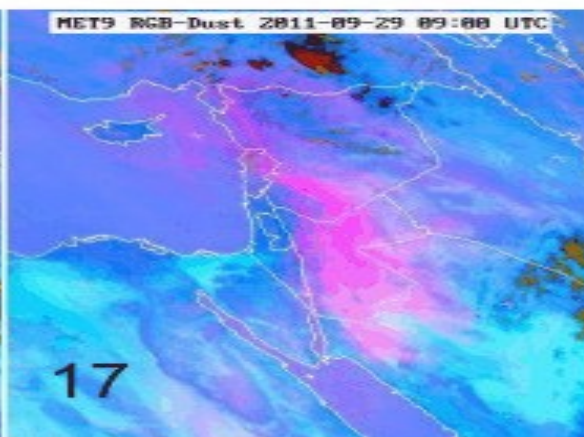
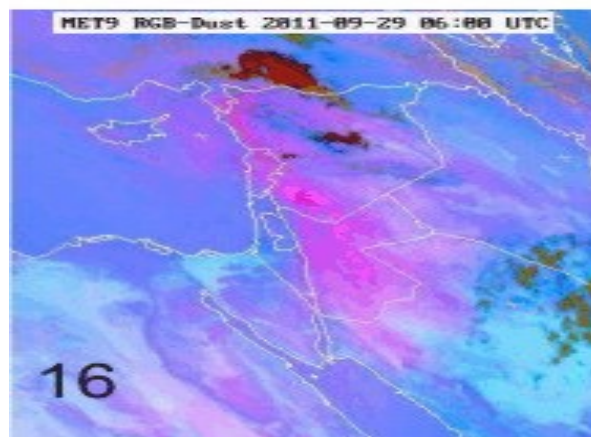
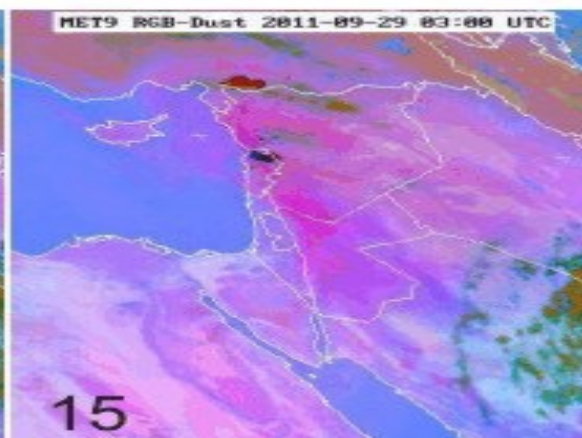
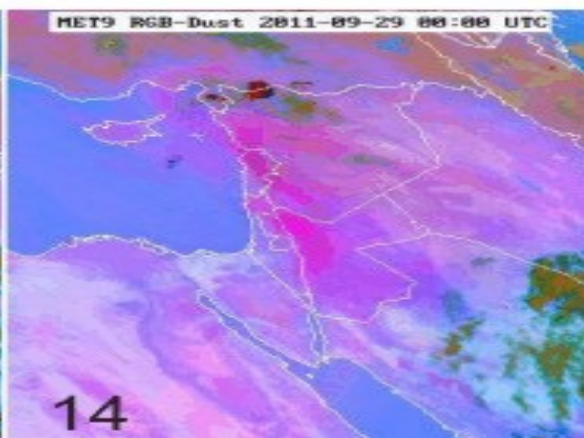
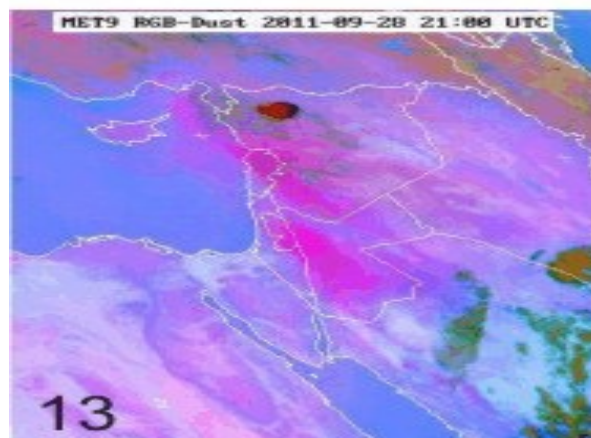
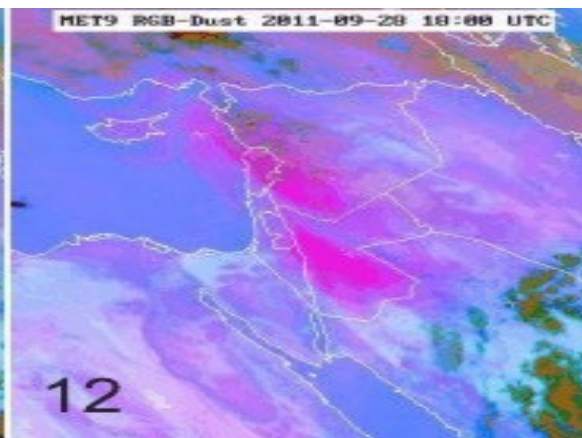
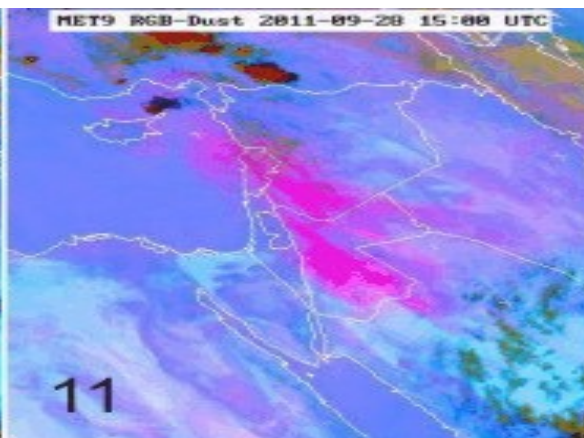
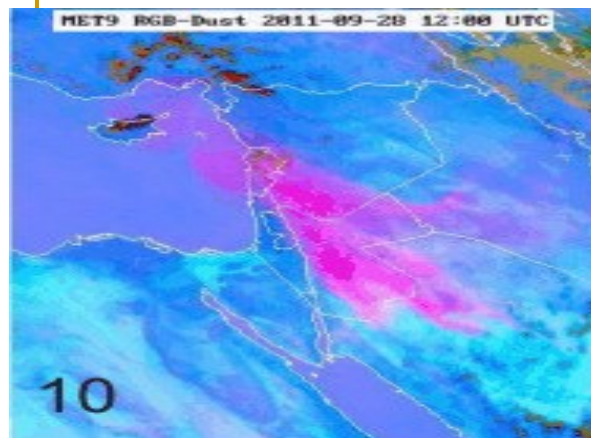
ENDING: WHEN NEARLY THE WIND
BECOMING NORTH WESTERLY COMING
FROM SEA (WHEN THE AREA BEING
UNDER THE RIDGE PRESSURE SYSTEM.

THE PERIODE: ABOUT~3-DAYES.

**DUST HAZE WITH AN INVERSION OF
CLOSER LAYER TO THE SURFACE THATS
WHY STILL LONGER AND SLOWLY CAME
AND REMOVED.**









THE HACHEMIT KINGDOM OF JORDAN



THE KING: ABDALLAHA THE SECOND



well-known cities:



Petra :the rose red city.



Jerash



City center (Amman)



Dead sea: the lowest place in the world.

THANK YOU
